

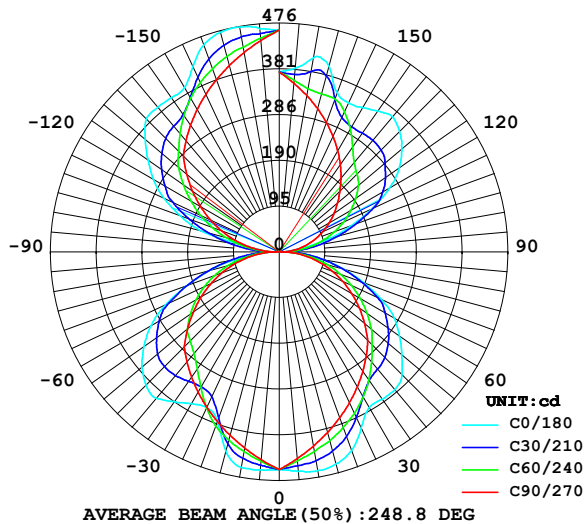
## LUMINAIRE PHOTOMETRIC TEST REPORT

Report number:

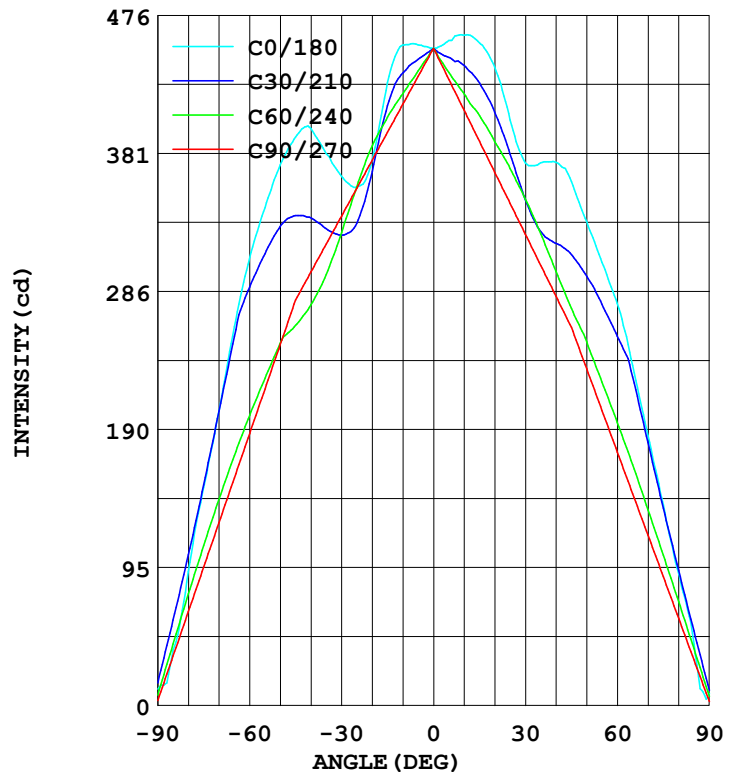
MANUFACTURER:	Address:	
NAME: 551115	TYPE:	WEIGHT:
SPECIFICATION:	DIMENSION:	SERIAL No.:

DATA OF LAMP		Imax(cd)	476.1	S/MH(C0/180)	1.25
MODEL		EFFICIENCY(%)	100.0	S/MH(C90/270)	1.12
NOMINAL POWER(W)	20	TOTAL FLUX(lm)	2696.7	Voltage(V)	230.3
RATED VOLTAGE(V)	230	EFFICIENCY(lm/W)	132.2	Current(A)	0.092
NOMINAL FLUX(lm)	2696.8	$\eta$ up(%)	49.1	Power(W)	20.40
LAMPS QUANTITY	1	$\eta$ down(%)	50.9	Power Factor(PF)	0.960
TEST VOLTAGE(V)	230.4	Effective Flux(lm)	2661.1	EEI	0.104

LUMINOUS INTENSITY DISTRIBUTION



LUMINOUS INTENSITY DISTRIBUTION



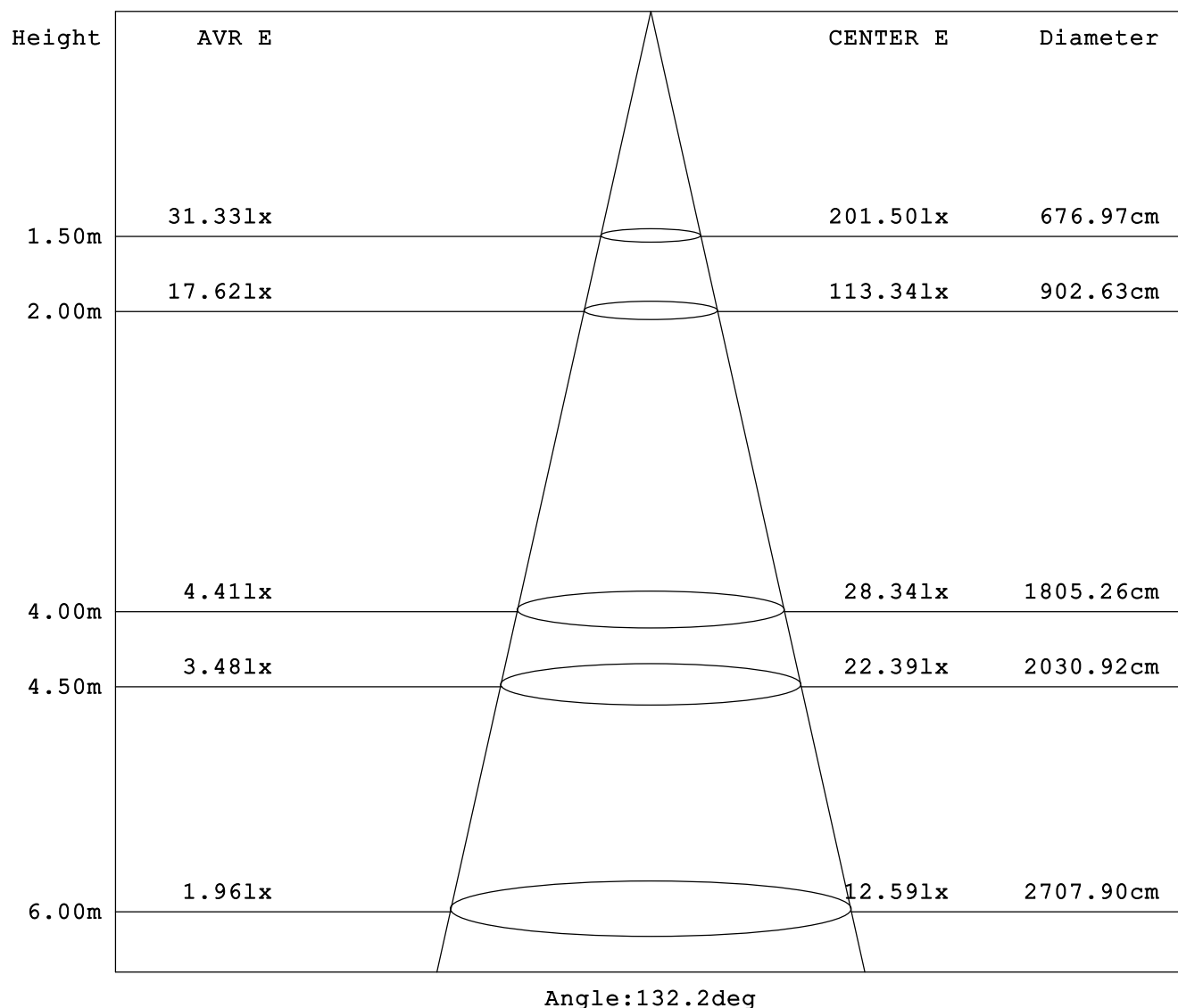
Test System: HOPOO HPG1900  
Temperature: 25.3 DEG  
Operators:  
Test Date: 2023年11月22日

Test Set: 5.0deg/s B-Beta (TYPE B)  
Humidity: 65.0%  
Test Distance: 16.000 m  
Remarks:

## AVERAGE AND CENTER E Figure

Report number:

MANUFACTURER:	Address:	
NAME: 551115	TYPE:	WEIGHT:
SPECIFICATION:	DIMENSION:	SERIAL No.:



Test System:HOPOO HPG1900  
Temperature:25.3DEG  
Operators:  
Test Date:2023年11月22日

Test Set: 5.0deg/s B-Beta (TYPE B)  
Humidity:65.0%  
Test Distance:16.000 m  
Remarks:

# HONGPU GONIOPHOTOMETERS SYSTEM TEST REPORT

## ZONAL FLUX DIAGRAM

Report number:

MANUFACTURER:	Address:	
NAME: 551115	TYPE:	WEIGHT:
SPECIFICATION:	DIMENSION:	SERIAL No.:

γ	C0	C45	C90	C135	C180	C225	C270	C315	γ	Φ zone	Φ total
5.0	455.6	441.3	434.0	443.0	458.7	441.4	431.9	439.7	0- 5	10.66	10.66
10.0	455.6	429.1	414.8	435.0	462.3	431.8	410.5	425.9	5- 10	31.25	41.91
15.0	429.5	411.5	395.5	422.6	456.9	417.6	389.2	407.1	10- 15	50.23	92.15
20.0	376.8	379.1	376.2	406.3	440.5	399.9	367.8	373.7	15- 20	66.11	158.2
25.0	357.6	339.7	356.9	384.3	403.9	376.3	346.4	332.9	20- 25	78.49	236.7
30.0	365.0	311.9	337.6	357.2	374.2	348.1	325.0	303.2	25- 30	88.75	325.5
35.0	380.6	300.4	318.3	332.8	374.5	321.6	303.6	289.2	30- 35	98.33	423.8
40.0	398.0	298.7	299.0	314.5	374.7	301.6	282.2	284.5	35- 40	107.6	531.5
45.0	392.1	300.2	279.8	301.8	361.4	287.0	260.8	283.0	40- 45	115.5	647.0
50.0	372.9	302.3	249.0	293.5	333.5	276.4	232.1	281.3	45- 50	119.7	766.8
55.0	343.5	297.3	218.3	284.2	305.6	265.2	203.5	273.9	50- 55	119.5	886.3
60.0	308.9	264.0	187.6	249.4	277.2	233.5	174.8	242.2	55- 60	114.6	1001
65.0	261.3	226.2	156.9	210.6	234.7	197.7	146.1	206.1	60- 65	105.1	1106
70.0	203.2	185.2	126.2	170.9	186.3	161.3	117.5	168.4	65- 70	91.07	1197
75.0	150.5	142.9	95.48	130.4	138.4	125.2	88.83	129.9	70- 75	73.67	1271
80.0	92.41	99.83	64.76	88.77	90.87	86.36	60.16	91.28	75- 80	54.20	1325
85.0	37.88	56.41	34.04	47.13	42.24	48.18	31.48	52.38	80- 85	33.70	1359
90.0	11.26	12.80	3.328	5.120	8.192	9.728	2.816	13.31	85- 90	13.88	1373
95.0	34.04	53.89	34.33	48.91	17.40	47.10	22.32	50.62	90- 95	13.15	1386
100.0	70.14	94.88	65.33	92.42	51.20	84.02	41.84	87.84	95-100	30.98	1417
105.0	168.1	135.7	96.34	135.2	109.5	121.1	61.35	125.0	100-105	50.89	1468
110.0	218.8	176.5	127.3	177.0	158.9	156.1	80.86	162.0	105-110	70.66	1539
115.0	264.7	217.2	158.3	217.0	213.5	191.5	100.3	198.9	110-115	87.86	1626
120.0	302.5	257.3	189.3	254.7	265.2	223.5	119.8	234.1	115-120	101.8	1728
125.0	333.3	293.3	220.3	289.0	305.1	253.1	139.4	263.8	120-125	111.4	1840
130.0	364.2	302.0	251.3	297.1	333.5	261.9	158.9	274.3	125-130	116.4	1956
135.0	391.6	310.9	282.3	298.3	354.3	265.5	178.4	284.5	130-135	116.8	2073
140.0	392.9	324.1	302.2	298.9	367.6	267.9	200.1	298.4	135-140	112.5	2186
145.0	391.6	343.7	322.1	301.9	357.8	272.9	221.9	317.5	140-145	105.0	2291
150.0	395.0	369.1	342.1	312.8	347.3	284.0	243.7	339.4	145-150	95.90	2386
155.0	425.4	395.7	362.0	339.4	342.0	309.2	265.4	362.1	150-155	86.25	2473
160.0	459.0	417.6	381.9	378.9	353.0	348.2	287.2	362.5	155-160	75.60	2548
165.0	473.3	433.2	401.8	413.0	400.8	369.1	308.9	357.8	160-165	62.85	2611
170.0	475.1	444.0	421.7	432.4	410.3	362.3	330.7	350.8	165-170	46.97	2658
175.0	466.4	451.1	441.6	447.6	383.4	364.1	352.5	358.5	170-175	28.79	2687
180.0	461.5	461.5	461.5	461.5	374.2	374.2	374.2	374.2	175-180	9.809	2697
DEG	LUMINOUS INTENSITY:cd								UNIT:lm		

Test System:HOPOO HPG1900  
Temperature:25.3DEG  
Operators:  
Test Date:2023年11月22日

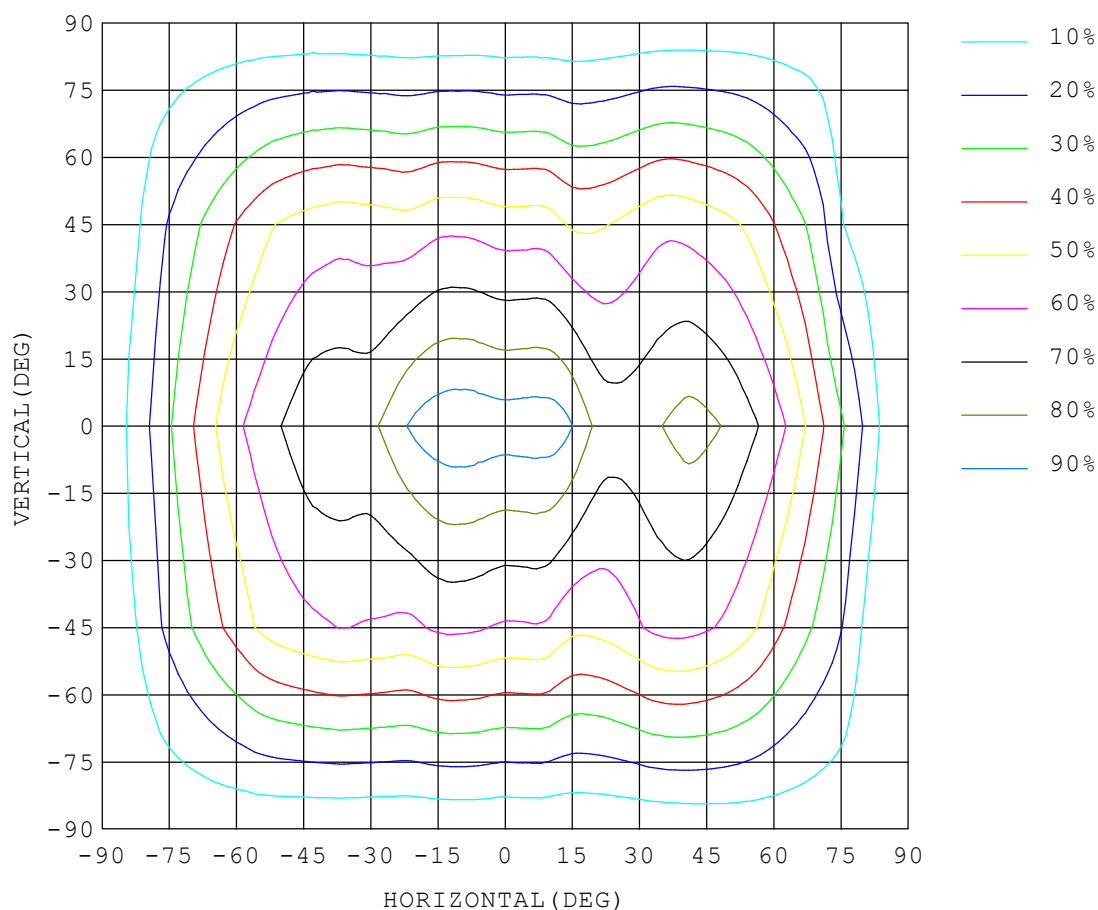
Test Set: 5.0deg/s B-Beta (TYPE B)  
Humidity:65.0%  
Test Distance:16.000 m  
Remarks:

## ISOCANDELA DIAGRAM

Report number:

MANUFACTURER:	Address:	
NAME: 551115	TYPE:	WEIGHT:
SPECIFICATION:	DIMENSION:	SERIAL No.:

UNIT: cd



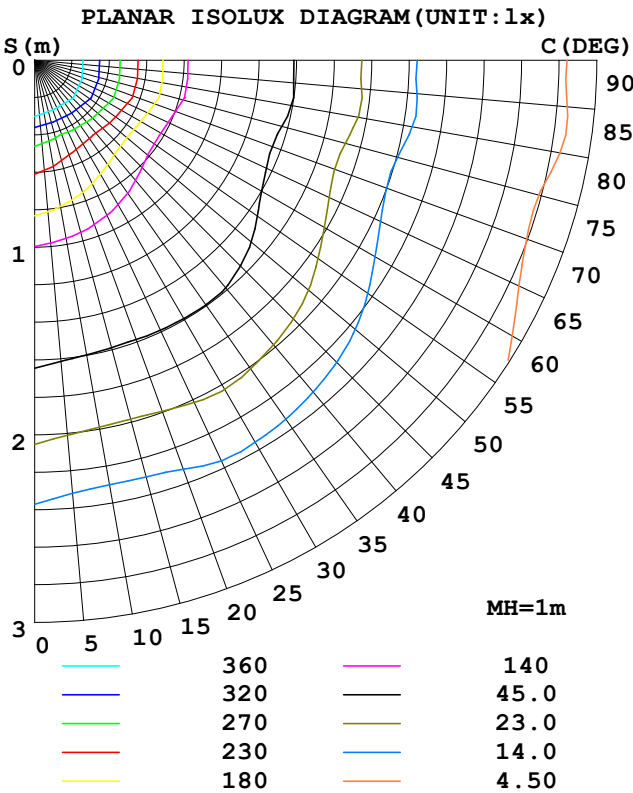
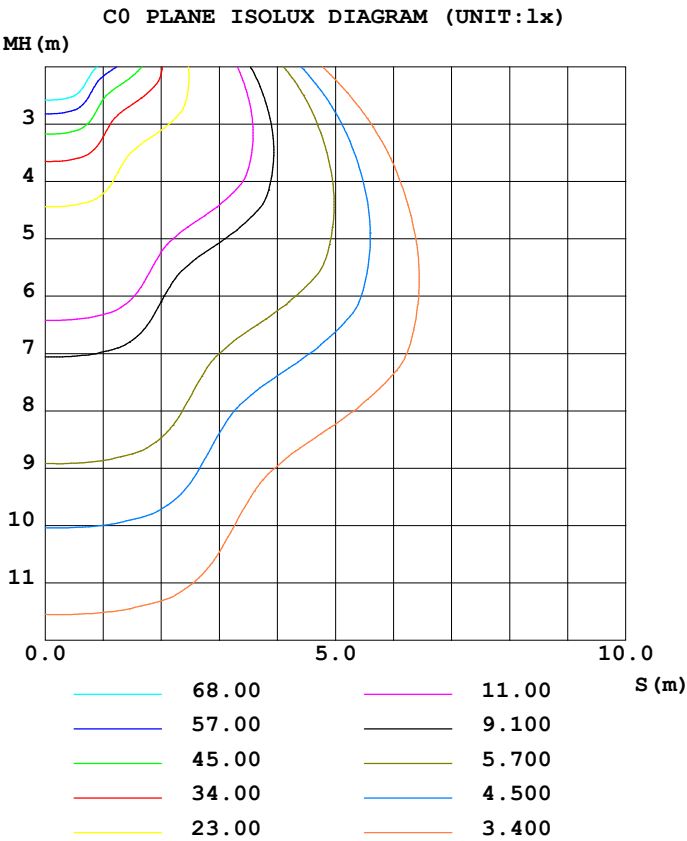
Test System:HOPOO HPG1900  
Temperature:25.3DEG  
Operators:  
Test Date:2023年11月22日

Test Set: 5.0deg/s B-Beta (TYPE B)  
Humidity:65.0%  
Test Distance:16.000 m  
Remarks:

ISOLUX DIAGRAM

Report number:

MANUFACTURER:	Address:	
NAME: 551115	TYPE:	WEIGHT:
SPECIFICATION:	DIMENSION:	SERIAL No.:



Test System:HOPOO HPG1900  
Temperature:25.3DEG  
Operators:  
Test Date:2023年11月22日

Test Set: 5.0deg/s B-Beta (TYPE B)  
Humidity:65.0%  
Test Distance:16.000 m  
Remarks:

## HONGPU GONIOPHOTOMETERS SYSTEM TEST REPORT

## LUMINOUS DISTRIBUTION INTENSITY DATA

Report number:

MANUFACTURER:	Address:	
NAME: 551115	TYPE:	WEIGHT:
SPECIFICATION:	DIMENSION:	SERIAL No.:

UNIT: cd

C (DEG) γ (DEG)	0	5	10	15	20	25	30	35	40	45	50	55	60	65	70
0.0	453	453	453	453	453	453	453	453	453	453	453	453	453	453	453
5.0	456	454	452	451	449	447	446	444	443	441	440	439	438	437	436
10.0	456	452	449	445	442	439	436	434	431	429	427	424	422	420	419
15.0	430	425	421	418	416	415	414	413	412	412	410	408	406	404	401
20.0	377	372	369	367	366	367	369	372	375	379	382	385	386	385	384
25.0	358	353	348	343	339	335	333	333	335	340	346	352	358	363	364
30.0	365	359	353	346	339	332	325	318	313	312	314	319	326	335	343
35.0	381	374	367	358	349	339	329	319	309	300	295	294	297	305	316
40.0	398	388	378	368	357	347	336	324	311	299	287	279	276	278	288
45.0	392	382	372	365	357	348	338	327	315	300	285	272	262	257	261
50.0	373	361	352	345	339	335	330	323	314	302	285	268	250	237	231
55.0	344	330	321	316	314	313	312	310	307	297	274	248	226	211	203
60.0	309	293	283	279	281	285	289	291	279	264	245	222	200	184	175
65.0	261	244	236	235	241	251	254	247	237	226	211	192	172	156	147
70.0	203	188	183	187	196	202	203	200	194	185	174	160	142	128	119
75.0	151	136	135	142	144	148	152	153	149	143	135	124	110	98.4	90.8
80.0	92.4	77.0	90.0	93.8	95.9	99.7	104	106	104	99.8	94.3	86.7	76.8	68.2	62.2
85.0	37.8	20.9	37.8	50.8	53.6	56.3	58.7	60.1	59.1	56.4	52.7	48.1	42.3	37.2	33.3
90.0	11.2	10.7	11.7	13.3	14.5	15.6	15.6	15.3	14.3	12.8	10.7	8.96	7.16	5.88	4.35
95.0	34.0	23.7	25.0	32.0	48.1	59.9	60.1	59.1	56.8	53.8	51.0	47.6	43.0	39.5	37.1
100.0	70.1	55.5	48.1	63.1	99.0	107	105	103	99.1	94.8	91.2	85.8	78.5	72.8	70.0
105.0	168	129	111	132	155	156	151	147	141	136	131	123	113	106	103
110.0	219	193	191	198	207	204	199	191	183	177	171	159	148	139	136
115.0	265	249	242	240	241	246	245	234	225	217	209	193	181	171	170
120.0	303	288	279	274	274	275	275	275	266	257	243	226	212	203	204
125.0	333	321	312	306	303	301	299	297	297	293	274	257	243	237	239
130.0	364	352	343	336	331	325	319	316	312	302	293	284	274	271	274
135.0	392	379	368	357	348	340	334	328	318	311	305	299	297	301	304
140.0	393	383	374	366	358	350	342	333	328	324	321	319	321	325	325
145.0	392	384	377	369	361	354	349	346	345	344	343	344	346	347	344
150.0	395	389	383	378	375	372	371	370	369	369	369	370	369	367	362
155.0	425	419	414	410	406	403	401	399	397	396	394	392	389	385	381
160.0	459	452	446	441	436	432	428	424	421	418	414	410	406	402	397
165.0	473	468	463	458	454	449	445	441	437	433	429	425	421	417	412
170.0	475	472	468	465	461	458	455	451	448	444	441	437	433	430	428
175.0	466	465	463	461	459	458	456	454	453	451	450	448	447	445	444
180.0	462	462	462	462	462	462	462	462	462	462	462	462	462	462	462

Test System:HOPOO HPG1900  
Temperature:25.3DEG  
Operators:  
Test Date:2023年11月22日

Test Set: 5.0deg/s B-Beta (TYPE B)  
Humidity:65.0%  
Test Distance:16.000 m  
Remarks:

## HONGPU GONIOPHOTOMETERS SYSTEM TEST REPORT

## LUMINOUS DISTRIBUTION INTENSITY DATA

Report number:

MANUFACTURER:	Address:		
NAME: 551115	TYPE:	WEIGHT:	
SPECIFICATION:	DIMENSION:	SERIAL No.:	

UNIT: cd

C (DEG) γ (DEG)	75	80	85	90	95	100	105	110	115	120	125	130	135	140	145
0.0	453	453	453	453	453	453	453	453	453	453	453	453	453	453	453
5.0	435	435	434	434	434	435	435	436	437	439	440	441	443	445	446
10.0	417	416	415	415	415	417	418	420	423	426	428	431	435	438	441
15.0	399	397	396	396	397	399	402	405	409	413	416	419	423	426	430
20.0	381	379	377	376	378	381	386	390	394	397	401	404	406	409	411
25.0	363	360	358	357	360	364	369	374	377	381	383	384	384	385	385
30.0	344	341	339	338	341	347	352	356	360	361	361	359	357	357	356
35.0	323	322	320	318	322	329	335	339	341	339	336	333	333	333	333
40.0	302	303	300	299	304	312	317	321	320	315	311	313	315	317	321
45.0	277	284	281	280	286	294	299	301	297	291	293	298	302	308	316
50.0	243	254	251	249	255	264	270	272	268	269	280	287	294	301	305
55.0	210	222	220	218	225	232	237	238	233	239	253	267	284	289	290
60.0	178	191	190	188	194	200	204	203	200	209	221	235	249	261	273
65.0	148	159	159	157	163	168	171	168	168	177	187	200	211	221	232
70.0	118	128	128	126	132	136	138	135	135	144	153	164	171	179	189
75.0	88.6	96.4	97.1	95.4	100	103	104	101	103	110	117	125	130	137	144
80.0	60.0	65.4	66.3	64.7	68.7	70.9	71.0	68.5	70.0	74.7	79.9	84.8	88.7	93.8	98.6
85.0	31.6	34.6	35.4	34.0	37.2	38.2	37.8	35.8	36.8	39.4	42.2	44.9	47.1	50.1	52.8
90.0	3.32	3.84	4.60	3.32	5.63	5.63	4.60	3.32	3.32	3.84	4.09	4.86	5.12	6.14	7.16
95.0	36.9	36.9	36.6	34.3	36.4	36.3	33.2	32.7	35.1	39.0	42.8	46.2	48.9	50.9	50.8
100.0	70.5	70.0	68.5	65.3	67.3	67.2	62.0	62.1	66.6	73.7	81.0	87.3	92.4	96.2	95.7
105.0	104	103	101	96.3	98.1	98.2	91.1	91.3	97.5	107	119	128	135	142	143
110.0	138	136	132	127	129	130	120	120	128	140	155	167	177	186	191
115.0	172	169	164	158	160	161	151	149	157	171	188	204	217	230	240
120.0	206	202	196	189	191	193	182	178	185	200	219	238	255	270	284
125.0	239	234	227	220	222	224	213	206	212	227	246	269	289	297	301
130.0	272	266	258	251	253	256	247	236	239	252	268	283	297	307	315
135.0	302	297	289	282	283	286	279	264	261	264	273	285	298	311	321
140.0	321	315	308	302	303	306	304	291	281	278	281	289	299	310	322
145.0	340	334	327	322	323	325	326	318	307	299	296	296	302	310	319
150.0	358	351	346	342	343	344	346	345	337	327	320	315	313	315	320
155.0	376	369	365	362	362	364	366	367	365	359	353	346	339	335	333
160.0	391	387	384	382	382	383	384	387	388	388	386	383	379	374	370
165.0	408	406	403	402	402	403	404	405	407	409	411	413	413	413	413
170.0	426	424	422	422	422	422	423	424	426	427	429	431	432	435	437
175.0	443	442	442	442	442	442	442	443	443	444	445	446	448	449	450
180.0	462	462	462	462	462	462	462	462	462	462	462	462	462	462	462

Test System:HOPOO HPG1900  
Temperature:25.3DEG  
Operators:  
Test Date:2023年11月22日

Test Set: 5.0deg/s B-Beta (TYPE B)  
Humidity:65.0%  
Test Distance:16.000 m  
Remarks:

# HONGPU GONIOPHOTOMETERS SYSTEM TEST REPORT

## LUMINOUS DISTRIBUTION INTENSITY DATA

Report number:

MANUFACTURER:	Address:		
NAME: 551115	TYPE:	WEIGHT:	
SPECIFICATION:	DIMENSION:	SERIAL No.:	

UNIT: cd

C (DEG) γ (DEG)	150	155	160	165	170	175	180	185	190	195	200	205	210	215	220
0.0	453	453	453	453	453	453	453	453	453	453	453	453	453	453	453
5.0	448	450	452	454	455	457	459	457	455	453	451	449	447	445	443
10.0	444	447	450	453	456	459	462	459	455	452	448	445	442	438	435
15.0	433	436	440	444	448	452	457	452	447	442	438	433	429	426	422
20.0	414	417	420	424	429	434	441	434	427	422	417	413	409	406	403
25.0	386	387	389	391	394	398	404	397	392	388	385	382	381	379	377
30.0	356	356	357	360	364	369	374	368	362	357	353	350	349	348	348
35.0	335	340	346	353	360	367	375	366	357	348	340	333	327	324	322
40.0	328	336	343	350	358	366	375	365	355	345	337	328	319	310	305
45.0	322	328	333	340	346	353	361	351	342	334	325	318	311	303	294
50.0	309	312	314	316	319	325	334	323	314	309	305	301	296	291	285
55.0	291	291	291	291	293	297	306	294	286	282	279	278	277	274	271
60.0	272	270	266	261	261	267	277	263	254	250	251	254	255	255	244
65.0	245	246	234	227	224	225	235	222	217	216	219	225	227	217	207
70.0	198	201	200	188	180	179	186	175	172	176	184	184	181	176	169
75.0	148	148	150	151	138	133	138	129	131	139	138	137	136	135	129
80.0	98.9	99.0	98.7	99.0	101	85.6	90.8	83.9	93.7	92.7	92.0	92.7	93.1	92.6	89.6
85.0	52.6	52.6	51.7	50.8	47.3	43.7	42.2	36.1	46.2	48.7	50.0	50.9	51.3	51.3	49.5
90.0	7.42	7.93	7.16	6.91	6.40	5.88	8.19	8.70	7.93	8.96	10.4	10.7	10.4	10.4	9.47
95.0	49.1	46.9	42.4	31.2	22.4	20.3	17.4	20.2	29.7	37.5	41.0	40.2	44.5	48.3	48.3
100.0	92.4	88.3	84.0	67.5	51.0	47.1	51.2	52.5	67.5	71.0	71.4	75.2	83.4	87.0	87.2
105.0	140	135	131	124	100	96.6	110	101	103	110	102	111	125	128	126
110.0	190	187	181	168	159	155	159	148	142	138	151	164	169	170	165
115.0	244	236	224	216	211	214	214	196	190	188	200	210	216	211	201
120.0	280	272	265	262	263	269	265	249	242	240	240	245	249	248	236
125.0	303	302	300	300	303	312	305	291	282	277	274	273	270	265	262
130.0	320	324	326	330	334	342	334	322	312	305	300	293	288	282	272
135.0	331	340	346	349	358	365	354	343	334	325	317	310	300	290	279
140.0	332	342	352	363	372	381	368	357	347	336	325	314	303	292	280
145.0	329	337	348	356	365	373	358	350	341	331	322	312	302	291	281
150.0	326	334	341	348	355	361	347	340	333	325	316	309	301	294	288
155.0	334	337	340	345	350	355	342	336	330	325	319	313	309	306	306
160.0	367	365	364	365	368	371	353	348	343	340	337	337	339	343	347
165.0	414	414	415	416	418	421	401	396	392	388	386	382	379	377	374
170.0	440	443	446	448	451	455	410	407	402	398	392	387	381	375	369
175.0	452	453	455	456	458	460	383	382	379	377	375	373	371	368	366
180.0	462	462	462	462	462	462	374	374	374	374	374	374	374	374	374

Test System:HOPOO HPG1900  
Temperature:25.3DEG  
Operators:  
Test Date:2023年11月22日

Test Set: 5.0deg/s B-Beta (TYPE B)  
Humidity:65.0%  
Test Distance:16.000 m  
Remarks:



# HONGPU GONIOPHOTOMETERS SYSTEM TEST REPORT

## LUMINOUS DISTRIBUTION INTENSITY DATA

Report number:

MANUFACTURER:	Address:		
NAME: 551115	TYPE:	WEIGHT:	
SPECIFICATION:	DIMENSION:	SERIAL No.:	

UNIT: cd

C (DEG) γ (DEG)	225	230	235	240	245	250	255	260	265	270	275	280	285	290	295
0.0	453	453	453	453	453	453	453	453	453	453	453	453	453	453	453
5.0	441	440	438	437	435	434	433	433	432	432	432	432	433	434	435
10.0	432	428	424	422	419	416	414	412	411	411	411	412	413	414	416
15.0	418	414	411	407	402	399	395	392	390	389	390	391	393	395	398
20.0	400	397	393	389	386	381	377	373	369	368	368	370	372	375	377
25.0	376	375	373	371	367	363	358	353	349	346	347	349	352	354	354
30.0	348	349	350	349	347	343	339	334	328	325	326	328	331	330	324
35.0	322	321	323	325	326	323	319	314	307	304	304	307	308	303	293
40.0	302	299	297	299	303	303	299	294	287	282	283	286	285	273	264
45.0	287	282	276	274	278	282	278	274	266	261	261	264	259	245	241
50.0	276	269	262	251	250	253	250	245	238	232	233	236	228	216	220
55.0	265	249	236	223	217	221	220	216	209	204	205	206	197	189	196
60.0	234	220	207	195	186	189	189	186	180	175	176	177	167	163	171
65.0	198	188	176	166	156	157	158	156	151	146	147	148	138	137	146
70.0	161	154	144	135	127	125	128	126	122	118	119	119	110	111	120
75.0	125	119	111	104	96.9	94.6	96.3	95.3	92.7	88.8	90.0	89.6	83.2	85.2	92.7
80.0	86.3	82.1	77.2	71.7	66.6	64.1	65.2	64.8	63.4	60.1	61.4	60.7	56.5	58.9	64.9
85.0	48.1	45.5	42.5	39.2	35.8	33.8	34.1	34.3	34.0	31.4	32.7	31.9	30.1	32.3	36.4
90.0	9.72	8.70	7.42	6.40	4.86	3.58	3.07	3.84	4.60	2.81	4.09	3.32	3.84	5.63	7.68
95.0	47.1	44.3	40.8	36.6	31.9	28.5	28.0	29.2	24.7	22.3	27.3	32.7	33.3	34.4	37.4
100.0	84.0	79.6	73.7	66.2	58.6	53.4	53.1	54.5	44.7	41.8	50.5	62.0	62.9	63.3	66.9
105.0	121	114	106	94.8	84.9	78.0	78.4	79.5	64.6	61.3	73.5	91.2	92.5	92.1	96.1
110.0	156	147	137	122	110	103	104	104	84.2	80.8	96.3	120	122	121	125
115.0	192	180	165	148	135	127	129	128	103	100	119	149	152	151	153
120.0	224	209	191	172	159	152	155	151	122	120	141	177	182	181	181
125.0	253	234	213	195	181	177	181	173	140	139	162	205	211	211	210
130.0	262	247	231	216	204	204	208	192	159	159	184	228	240	242	240
135.0	266	251	239	229	225	230	233	209	178	178	206	247	267	268	267
140.0	268	257	248	243	248	253	251	222	200	200	225	252	279	284	288
145.0	273	266	263	267	274	277	265	237	223	222	242	258	288	297	304
150.0	284	283	289	296	298	295	275	253	245	244	260	267	293	307	316
155.0	309	317	322	322	319	305	286	271	268	265	278	282	297	313	324
160.0	348	347	346	339	326	312	299	291	289	287	295	299	303	316	327
165.0	369	361	351	341	331	322	315	312	311	309	313	317	318	321	329
170.0	362	357	351	345	341	338	335	334	332	331	332	335	336	337	338
175.0	364	362	360	359	357	356	355	354	353	353	353	353	354	355	356
180.0	374	374	374	374	374	374	374	374	374	374	374	374	374	374	374

Test System:HOPOO HPG1900  
Temperature:25.3DEG  
Operators:  
Test Date:2023年11月22日

Test Set: 5.0deg/s B-Beta (TYPE B)  
Humidity:65.0%  
Test Distance:16.000 m  
Remarks:

## HONGPU GONIOPHOTOMETERS SYSTEM TEST REPORT

## LUMINOUS DISTRIBUTION INTENSITY DATA

Report number:

MANUFACTURER:	Address:	
NAME: 551115	TYPE:	WEIGHT:
SPECIFICATION:	DIMENSION:	SERIAL No.:

UNIT: cd

C (DEG) γ (DEG)	300	305	310	315	320	325	330	335	340	345	350	355
0.0	453	453	453	453	453	453	453	453	453	453	453	453
5.0	436	437	438	440	441	443	445	446	448	450	452	454
10.0	418	421	423	426	428	431	434	437	441	444	448	452
15.0	400	402	405	407	409	410	411	412	414	417	420	424
20.0	379	378	376	374	370	367	365	364	363	365	368	372
25.0	350	345	339	333	329	327	328	330	335	340	346	352
30.0	316	310	305	303	305	311	317	325	334	342	350	358
35.0	286	283	284	289	298	308	320	331	342	353	363	372
40.0	262	265	273	285	298	311	325	337	349	361	373	386
45.0	246	255	268	283	298	312	323	334	345	355	366	378
50.0	232	249	265	281	294	303	311	318	325	334	345	358
55.0	209	229	252	274	282	285	289	294	299	306	315	327
60.0	186	205	226	242	253	263	264	266	266	269	276	289
65.0	160	178	195	206	214	223	231	232	226	225	230	241
70.0	133	148	161	168	175	182	186	185	182	178	177	183
75.0	104	116	125	130	135	139	140	137	134	127	111	118
80.0	73.0	81.9	87.6	91.2	94.9	97.1	95.6	92.6	89.0	68.4	46.7	62.7
85.0	41.5	46.7	50.0	52.3	54.3	55.3	54.2	52.2	47.9	31.4	22.7	19.2
90.0	9.47	11.0	12.2	13.3	13.8	14.3	14.5	14.5	13.8	12.2	10.7	11.7
95.0	41.2	45.3	48.6	50.6	52.5	54.2	54.9	55.2	55.4	49.3	32.1	23.3
100.0	72.6	79.1	84.9	87.8	91.2	94.4	96.0	97.1	98.9	98.2	79.4	62.1
105.0	104	112	121	125	129	135	138	141	144	149	144	146
110.0	134	144	156	162	168	175	181	186	188	187	189	198
115.0	163	174	188	199	205	213	223	226	224	225	231	241
120.0	191	203	218	234	243	251	253	255	256	260	267	279
125.0	217	231	246	264	272	274	278	282	286	292	300	311
130.0	244	255	264	274	286	293	299	306	314	321	329	341
135.0	265	270	277	285	294	304	314	322	332	343	355	367
140.0	288	290	294	298	304	311	321	331	341	351	361	372
145.0	311	312	314	318	320	324	329	336	344	353	363	372
150.0	324	334	337	339	343	346	348	351	356	362	368	375
155.0	333	341	353	362	365	369	374	379	383	388	393	399
160.0	336	345	354	363	373	385	394	400	404	409	415	422
165.0	336	342	350	358	365	373	380	387	393	400	407	413
170.0	340	343	347	351	354	358	361	365	369	374	378	381
175.0	356	357	358	359	360	361	362	363	365	366	367	369
180.0	374	374	374	374	374	374	374	374	374	374	374	374

Test System:HOPOO HPG1900  
Temperature:25.3DEG  
Operators:  
Test Date:2023年11月22日

Test Set: 5.0deg/s B-Beta (TYPE B)  
Humidity:65.0%  
Test Distance:16.000 m  
Remarks: